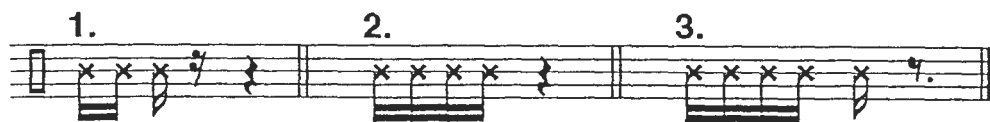


Forme mit allen vier Fingern ein rundes "C" über den Saiten und klopfe leicht und locker im Rhythmus gegen den Rand des Instrumentes. Lasse Deinen Ellbogen nicht hängen, sondern halte den Oberarm beinahe parallel zum Fußboden.



Die D - Dur Tonleiter

Two systems of musical notation for the D major scale in bass clef, 4/4 time. The first system shows the scale in two parts: Violoncello (Vc) and Kontrabaß (Kb). The Vc part has fingerings 0, 1, 3, 4, 0, 1, 3, 4. The Kb part has fingerings 0, 1, 4, 0, 0, 1, 4, 0. The second system shows the scale in two parts: Violoncello (Vc) and Kontrabaß (Kb). The Vc part has fingerings 0, 1, 3, 4, 0, 1, 3, 4. The Kb part has fingerings 2, 0, 1, 2, 0, 1, 4, 0.

Die G - Dur Tonleiter

Two systems of musical notation for the G major scale in bass clef, 4/4 time. The first system shows the scale in two parts: Violoncello (Vc) and Kontrabaß (Kb). The Vc part has fingerings 0, 1, 3, 4, 0, 1, 3, 4. The Kb part has fingerings 2, 0, 1, 2, 0, 1, 4, 0. The second system shows the scale in two parts: Violoncello (Vc) and Kontrabaß (Kb). The Vc part has fingerings 0, 1, 3, 4, 0, 1, 3, 4. The Kb part has fingerings 2, 0, 1, 2, 0, 1, 4, 0.